

Possible side effects may include: lungs filling with sighs of relief.

Now you can pinpoint and treat the lumpectomy site —
and protect healthy organs.



See what you treat. Treat what you see.

We're taught to target the scar site when we're delivering the boost dose. But studies show that this method misses the intended target 50%¹ of the time. We don't think that's good enough. That's why we created AccuBoost powered by Nucletron, the revolutionary new breast boost therapy system brought to you by the worldwide leader in brachytherapy.

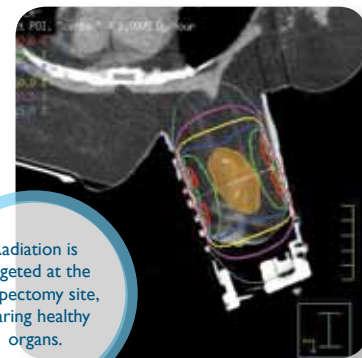
AccuBoost

- Mammographic image guidance for localization and accurate targeting of the dose
- Non-invasive
- Conformal dose reduces exposure to breast tissue
- Reliable, reproducible and easy to use
- Appropriate and adequate reimbursement coding
- Pay-per-use financing eliminates capital expense
- Turnkey system includes the mammography station, CR station, microSelectron Digital Afterloader and applicators

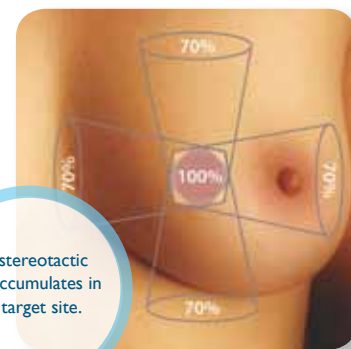
Nucletron

- State-of-the-art imaging, treatment planning and treatment delivery solutions for radiation oncology
- Scalable and flexible family of HDR and PDR digital afterloaders
- Proven track record of safety and reliability
- Full-service training, licensing, reimbursement and customized service support
- Creative financing options to begin or expand your brachytherapy practice

To learn more, call 800.336.2249 or
visit us online at www.TreatWhatYouSee.com



Radiation is targeted at the lumpectomy site, sparing healthy organs.



The stereotactic dose accumulates in the target site.



The turnkey system includes everything you need to start treating your patients.

¹ Oh, Int J Radiation Oncology Biol Phys, 2006.

Acclaim for AccuBoost powered by Nucletron

Targeting the boost dose has presented a clinical challenge to radiation oncologists. With AccuBoost, we clearly define the target volume prior to each fraction. We now have the utmost confidence that we are treating exactly where we need to be.

David E. Wazer, MD
Radiation Oncologist-in-Chief
Tufts Medical Center, Boston, MA
Rhode Island Hospital, Providence, RI

The AccuBoost system gives us the ability to visualize the tumor bed before each treatment for accurate targeting of the dose. The dose-sparing design, where the dose to healthy tissue is reduced, especially to the underlying lung, is an attractive feature of AccuBoost.

Bradley Prestidge, MD
CEO, President and Medical Director
The Texas Cancer Clinic, San Antonio, TX

The AccuBoost treatment is a way we can pinpoint the area in the breast and very accurately deliver the radiation to that spot in the breast that is at risk of recurrence.

Scot Ackerman, MD
Radiation Oncologist
First Coast Oncology, Jacksonville, FL

I am excited to make the AccuBoost procedure available to my patients. The conformal and targeted dose will make a strong contribution to patient outcomes. The patient appreciates the due diligence and the level of care that goes into targeting the dose accurately.

Jack Tidwell, MD
Radiation Oncologist
Tidwell Cancer Treatment Center, Columbus, GA

This is unbelievably so simple! It makes you ask why no one thought of this sooner. The biggest selling point [for AccuBoost] is the accuracy for targeting where we want to deliver the radiation.

Erich Randolph, MD
Chief Medical Officer
Atlanta Oncology Associates, Atlanta, GA



See what you treat. Treat what you see.